

Viewings

Viewings by arrangement only.
Call 0114 4830038 to make an appointment.

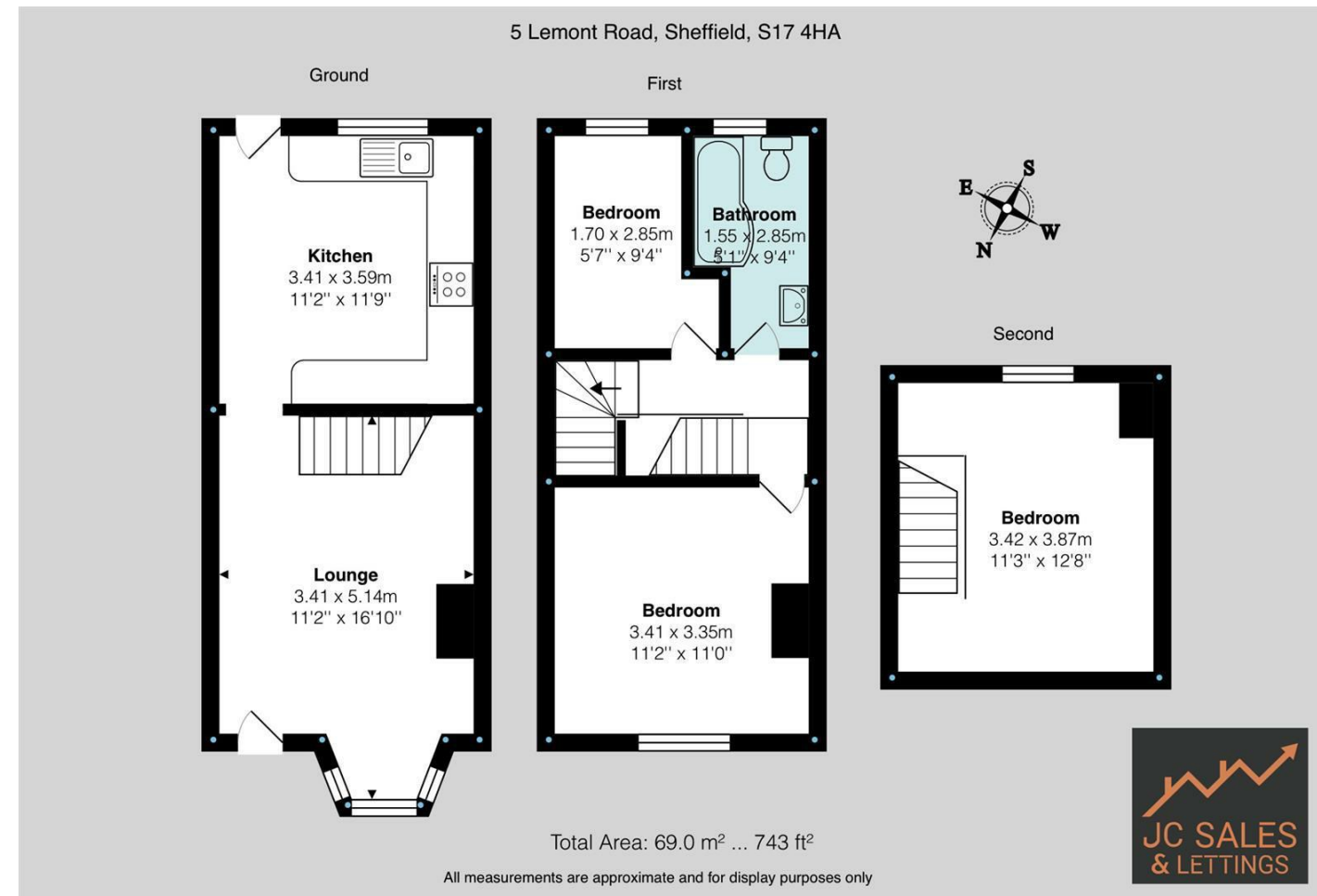
Vendors Comments

Add text here

Energy Efficiency Rating		Current	Potential
Very energy efficient - lower running costs			
(92 plus)	A		
(81-91)	B		
(69-80)	C		
(55-68)	D		
(39-54)	E		
(21-38)	F		
(1-20)	G		
Not energy efficient - higher running costs			
England & Wales		EU Directive 2002/91/EC	

JC SALES & LETTINGS

Tel: 0114 483 0038
E-mail: sales@jc-salesandlettings.com
Website: www.jc-salesandlettings.com



5 Lemont Road, Sheffield, S17 4HA

Guide price £275,000

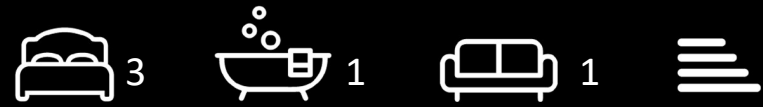
- Guide Price £275,000 - £300,000
- Stunning rear views over Green Oak Park
- Close to excellent local primary schools
- Well-proportioned lounge and kitchen/diner
- Ideal for first time buyers or families
- Three bedroom mid-terraced home in Totley
- Accommodation arranged over three storeys
- Convenient for the Peak District
- Immaculate south facing rear garden
- Sold with no vendor chain

5 Lemont Road, Sheffield S17 4HA

Guide Price £275,000 - £300,000

CHARMING THREE BEDROOM MID-TERRACED HOME WITH STUNNING PARK VIEWS - TOTLEY

JC Sales & Lettings are delighted to offer to the market this beautifully presented three bedroom mid-terraced home, arranged over three storeys and situated in the highly sought after location of Totley. The property enjoys far-reaching views over Green Oak Park to the rear, is within easy reach of excellent local primary schools, and is perfectly placed for those wishing to explore the Peak District, making it an ideal purchase for a first time buyer or growing family alike. Externally, the property benefits from an immaculate south facing rear garden, perfect for entertaining and making the most of the sunshine throughout the day. The property is offered to the market with no onward chain. Properties of this calibre in such a popular Totley location are always in high demand, so early viewing is strongly recommended to avoid disappointment. Awaiting EPC.



Council Tax Band: B

